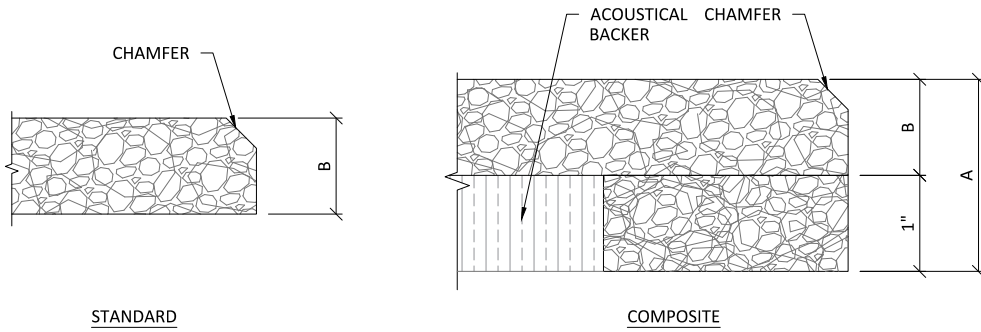


**1** TYPICAL PANEL OPTIONS  
 1 SCALE: 3/4" = 1'-0"



FINISH OPTIONS
PRIMED CLEAR
PRIMED WHITE
CUSTOM PAINTED
FABRIC WRAPPED

PANEL OPTIONS	
A	B
2"	1"
2-3/8"	1-3/8"
3"	2"

**2** PANEL PROFILE OPTIONS  
 1 SCALE: 6" = 1'-0"

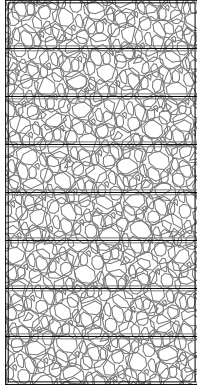


**ENVIROACOUSTIC WOOD WOOL - Z-CLIP WALL SYSTEM  
 PANEL OPTIONS**

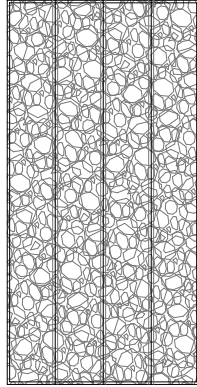
SHEET NUMBER  
**1**

SCALE: AS NOTED      LAST REVISED: 1/31/2020      DRAWN BY: TL

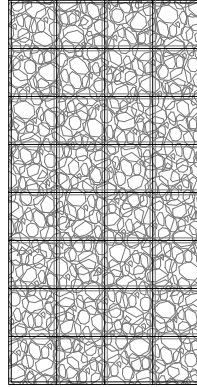
DO NOT SCALE DRAWING. FIGURED DIMENSIONS ARE TO BE FOLLOWED. READ THIS DRAWING IN CONNECTION WITH GENERAL ARCHITECTURAL PLANS, STRUCTURAL PLANS, AND OTHER RELATED DRAWINGS. THESE DRAWINGS REPRESENT ASI'S UNDERSTANDING AND INTERPRETATION OF THE ARCHITECTURAL DRAWINGS AND HOW ASI PRODUCTS RELATE TO THE PROJECT. COPYRIGHT ASI © 2020



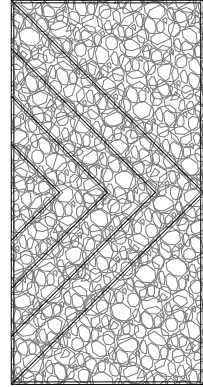
HORIZON



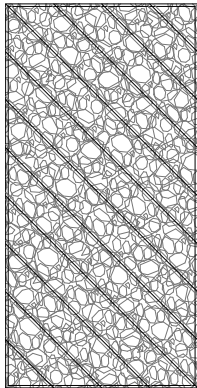
PINSTRIPES



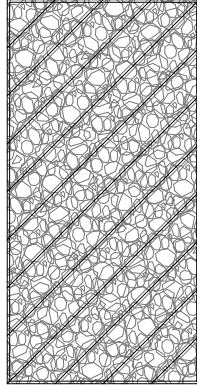
CHECKERBOARD



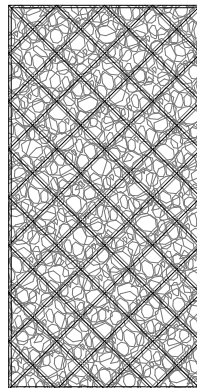
HALF DIAMOND



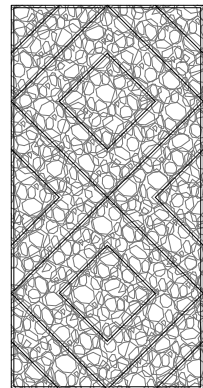
DIAGONAL LEFT



DIAGONAL RIGHT



CRISSCROSS

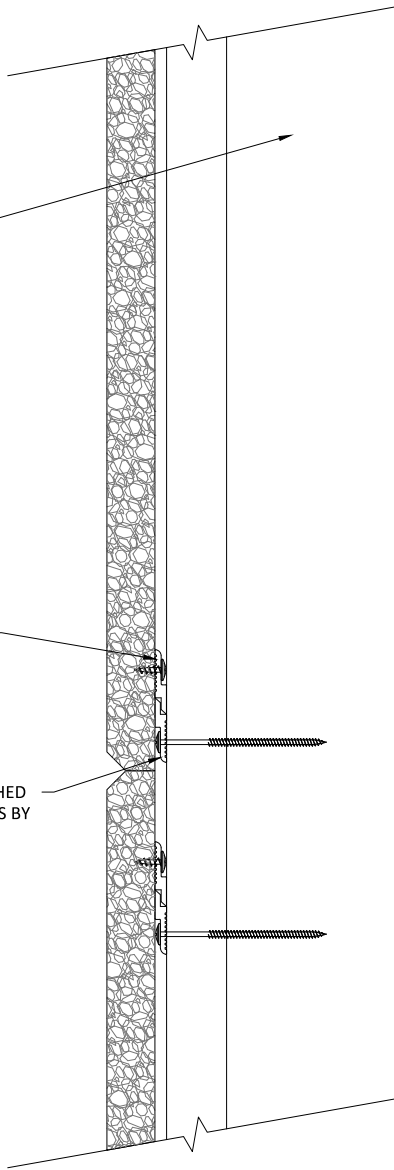


DOUBLE DIAMOND

TYP. WALL ASSEMBLY  
(BY OTHER)

Z-CLIP (FIELD ATTACHED  
TO BACK OF PANEL)

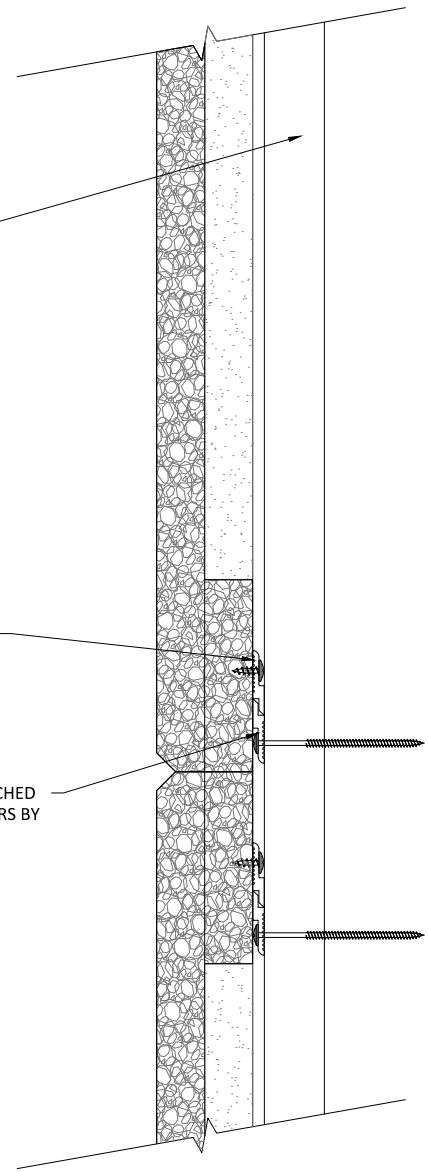
Z-CLIP/Z-BAR FIELD ATTACHED  
TO STRUCTURE (FASTENERS BY  
OTHER)



TYP. WALL ASSEMBLY  
(BY OTHER)

Z-CLIP (FIELD ATTACHED  
TO BACK OF PANEL)

Z-CLIP/Z-BAR FIELD ATTACHED  
TO STRUCTURE (FASTENERS BY  
OTHER)

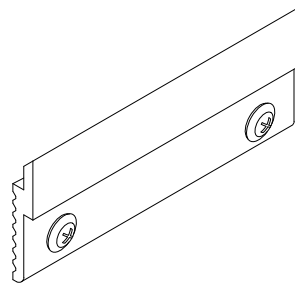


1 Z-CLIP SYSTEM SECTION (STANDARD)  
3 SCALE: 3" = 1'-0"

2 Z-CLIP SYSTEM SECTION COMPOSITE  
3 SCALE: 3" = 1'-0"



3 Z-CLIP PROFILE  
3 SCALE: 1" = 1'-0"



4 Z-CLIP  
3 SCALE: 6" = 1'-0"

TYP. WALL ASSEMBLY  
(BY OTHER)

Z-BAR/Z-CLIP (FIELD  
ATTACHED TO  
STRUCTURE)

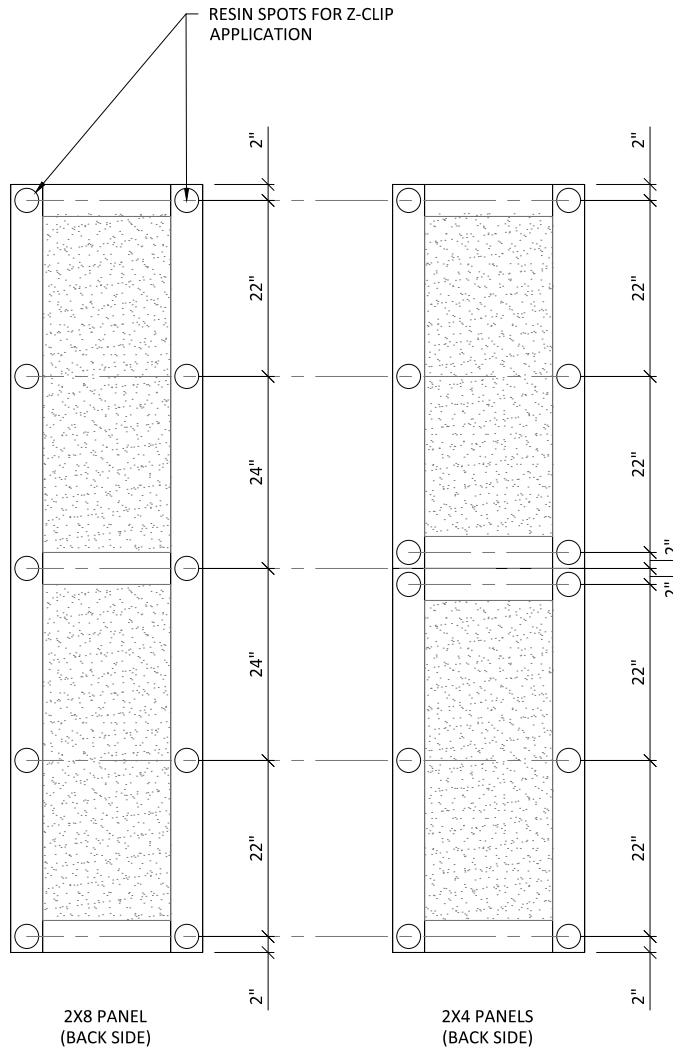
1 Z-CLIP SYSTEM ISOMETRIC STANDARD  
4 SCALE: 1 1/2" = 1'-0"

TYP. WALL ASSEMBLY  
(BY OTHER)

Z-BAR/Z-CLIP (FIELD  
ATTACHED TO  
STRUCTURE)

**1** Z-CLIP SYSTEM ISOMETRIC COMPOSITE  
**5** SCALE: 1 1/2" = 1'-0"





LAYOUT IS FOR USE WITH Z-CLIPS  
 ATTACHED WITH #8 -  $\frac{3}{4}$ " TRUSS  
 HEAD SCREWS

**1** Z-CLIP SYSTEM RESIN SPOT LAYOUT COMPOSITE  
**7** SCALE: 1/2" = 1'-0"